

**School District of Whitefish Bay
1200 East Fairmount Avenue
Whitefish Bay, Wisconsin 53217**

TO: Instruction Committee
FROM: Laura Myrah
cc: Dr. Mary Gavigan
RE: Results of District and State Assessment Measures
DATE: August 3, 2011

Recommendation: That the Instruction Committee accept the 2010-2011 District Assessment Report.

Background: This annual report gives a broad view of student performance on various district, state and national assessments. It is important to note that each of these assessments is only one measure of how our students are performing.

The report is organized into the following sections:

Part One: Overview of Assessments, including the test, the origin of the test, the dates of administration and a brief description of the assessment.

Part Two: Results of the Wisconsin Knowledge and Concepts Examination (WKCE) for students in grades 4, 8 and 10 (math, reading, science, social studies, language arts) and grades 3, 5, 6, 7 (math and reading).

Part Three: Results of the Iowa Test of Basic Skills (ITBS) for grades 3, 5, and 7. The ITBS is a locally adopted national assessment, and has been used by the district for many years.

Part Four: Results of the ACT, SAT, and AP exams along with summary data on National Merit Scholars

During the Instruction Committee meeting, an oral report will be given to highlight portions of this document, as well as other related student-achievement topics.

SCHOOL DISTRICT OF WHITEFISH BAY
1200 EAST FAIRMOUNT AVENUE
WHITEFISH BAY, WISCONSIN 53217

2010-2011

**Report of
Student Achievement**

**Knowledge and Concepts Examinations
Iowa Tests of Basic Skills
Scholastic Aptitude Test
American College Test
Advanced Placement Exams
National Merit Scholarship Qualifying Test**

Part ONE

Overview of District Assessments

Overview of District Assessments

The School District of Whitefish Bay currently administers an assessment program comprised of the following measures:

Test	Origin	Dates of Administration	Description of this measure
Wisconsin Student Assessment System: <i>Knowledge and Concepts Examination</i>	Administration by Wisconsin public schools required by law: grades 4, 8, and 10 in reading, language arts, math, science and social studies. 3, 5, 6, 7 in math and reading only.	November	Multiple choice tests: X reading X mathematics X language X science and social studies Short answer tests in: X reading X mathematics X social studies X science These two types of tests combine to yield a score which places a student in one of four categories: X Advanced Proficient X Proficient X Basic X Minimal Writing Test: requires students to plan, write and edit one composition on assigned topics. This test yields one holistic score from 1 to 6 points, and a conventions score from 1 to 3 points.

Test	Origin	Dates of Administration	Description of this measure
<i>Iowa Tests of Basic Skills and the Cognitive Abilities Test (ITBS and CogAT)</i>	District assessment Grades 3,5,7	Late January to early February	Cognitive Abilities measures the student's ability to work with three basic types of symbols (verbal, quantitative, and geometric) involved in the learning process. Iowa Tests of Basic Skills measure academic performance in the areas of reading, language, mathematics, and work-study skills. The test yields a national percentile score for each student in each of the tested areas, along with a grade equivalent score.

Elective Assessments

Test	Origin	Dates of Administration	Description of this measure
ACT	American College Testing Program	Typically during grades 11 and 12	College entrance exam which measures the four basic areas of English, mathematics, reading, and science reasoning.
SAT	Scholastic Aptitude Test	Typically during grades 11 and 12	College entrance exam which measures verbal and mathematical reasoning abilities related to successful performance in college.
AP	College Board Advanced Placement Test	Typically during grades 11 and 12 as culmination to AP courses	College-level exam typically, but not exclusively, taken upon completion of an AP course in high school. Test is scored on a 1 – 5 scale. Earning a score of 3, 4 or 5 is considered passing and may earn college credit upon entering a college/university.

Understanding the Scores

National Percentile Rank

Some spreadsheets show the scores of our students in percentile rankings. This score shows the relative strength or rank when compared to a group of students who are in the same grade and who were tested at the same time of year during the national standardization. This large group of students attended schools that are representative of schools throughout the nation in terms of

region, enrollment size, and socioeconomic status. The district also looks carefully at the local percentile rank information. This score permits an interpretation of individual achievement in terms of local conditions such as particular curricular issues, community background, etc. Both of these scores are useful for analysis of areas of strength and weakness for an individual student, a group of students, or a grade level.

Grade Equivalent

Some spreadsheets show the scores of our students in grade equivalent scores. The grade equivalent score is a number that describes a student's location on an achievement continuum. Grade equivalent scores are useful and convenient for measuring individual or group growth over time, and for estimating developmental status in terms of grade level.

It should be noted that all test scores are useful to a degree, yet each has limitations and can lead to misunderstandings. The key is to use the type of score that matches the purposes for testing.

Proficiency Levels

These are levels of performance established by the State of Wisconsin.

There are four proficiency levels: Advanced, Proficient, Basic and Minimal. The levels of achievement expected for each level vary across each subtest area. A national percentile score might yield an advanced score in one subtest area, and a similar percentile score might yield a score of basic in another level.

Proficiency Scores: Their Categories and Characteristics

Advanced	Proficient	Basic	Minimal Performance
The student is distinguished in the content area. Academic achievement is beyond mastery. Test score provides evidence of in-depth understanding in the academic content area tested.	The student is competent in the content area. Academic achievement includes mastery of the important knowledge and skills. Test score shows evidence of skills necessary for progress in the academic content area tested.	The student is somewhat competent in the content area. Academic achievement includes mastery of most of the important knowledge and skills. Test score shows evidence of at least one major flaw in understanding the academic content area tested.	There is limited achievement in the content area. Test score shows evidence of major misconceptions or gaps in knowledge and skills tested in the academic content area.

Part TWO

Wisconsin Student Assessment System Knowledge and Concepts Examination

Grades 3,4,5,6,7,8 and 10

Understanding the Wisconsin Knowledge and Concepts Examination (WKCE) 4TH, 8th and 10th Grade Test Results

The **WKCE** test at grades 4,8 and 10 consist of two sections: the **Knowledge and Concepts Examinations** and the **Writing Assessment**.

Knowledge and Concepts:

The Knowledge and Concepts Examination is a combination of multiple-choice and short-response items in four curriculum areas: Reading/Language Arts, Mathematics, Science, and Social Studies in grades 4,8 and 10. In grades 3,5,6 and 7 students are tested only in Reading and Mathematics.

The state prefers to report the scores in terms of the four proficiency categories; minimal, basic, proficient and advanced.

Writing:

The WKCE Writing Assessment requires students to plan, write, and edit a composition on a specific topic within a certain amount of time. This year, fourth grade students were asked to write a descriptive essay, while eighth and tenth grade students were asked to write a persuasive essay. This year, a 9-point scale was used to better align to a six-traits writing format.

The six-point scale for composition of student essays for the WKCE is scored as:

- 6 Exemplary control of the domain.
- 5 Advanced control of the domain.
- 4 Acceptable control of the domain.
- 3 Proficient control of the domain.
- 2 Minimal control of the domain.
- 1 Off topic.

The three-point scale for conventions of written English.

- | | | |
|---|-----------------|---|
| 3 | Advanced | The response demonstrates advanced control of a wide range of conventions identified in Wisconsin's Model Academic Standards. |
| 2 | Proficient | The response demonstrates proficient control of essential conventions identified in Wisconsin's Model Academic Standards. |
| 1 | Minimal Control | The response demonstrates minimal control of essential conventions identified in Wisconsin's Model Academic Standards. |

WKCE Writing Test

Student Distribution of Scores Across 9 Point Holistic Scale

Data Source: WI Student Assessment System Turnleaf Website

2010-2011			
GRADE	DOMAIN	AVERAGE SCORE	RANGE (LOW-HIGH)
4	descriptive	5.4	2 - 9
8	persuasive	5.9	3.5 - 9
10	persuasive	6.4	3 - 9

2009-2010			
GRADE	DOMAIN	AVERAGE SCORE	RANGE (LOW-HIGH)
4	descriptive	4.9	2 - 8
8	persuasive	6.0	2.5 - 8.5
10	persuasive	5.8	2 - 9

2008-2009			
GRADE	DOMAIN	AVERAGE SCORE	RANGE (LOW-HIGH)
4	descriptive	5.2	2 - 8
8	persuasive	5.6	2 - 9
10	persuasive	5.8	3.5 - 9

2007-2008			
GRADE	DOMAIN	AVERAGE SCORE	RANGE (LOW-HIGH)
4	descriptive	5.4	3 - 9
8	persuasive	5.7	4 - 8
10	persuasive	5.8	2 - 9

2006-2007			
GRADE	DOMAIN	AVERAGE SCORE	RANGE (LOW-HIGH)
4	descriptive	5.5	2 - 7.5
8	persuasive	5.9	3.5 - 9
10	persuasive	6.1	3 - 9

WFB Longitudinal WKCE & WAA Aggregate PERCENTAGE Scores

Data Source: WI Dept. Public Instruction WINSS Website

Percentages may not add to 100% due to rounding.

Proficient & Advanced percentages may not add to the same number shown in the “% Prof. & Advanced” column due to rounding.

Grade 3		% Minimal	% Basic	% Proficient	% Advanced	% Prof. & Advanced
<i>WI Reading</i>	<i>Fall 2010</i>	5	14	35	45	80
WFB Reading	Fall 2010	1	7	22	71	92
	Fall 2009	1	4	25	70	95
	Fall 2008	1	7	20	72	92
	Fall 2007	5	4	17	74	91
	Fall 2006	1	5	17	76	93
<i>WI Math</i>	<i>Fall 2010</i>	16	10	42	32	74
WFB Math	Fall 2010	6	4	30	59	90
	Fall 2009	3	6	25	67	92
	Fall 2008	3	5	24	68	92
	Fall 2007	5	6	25	63	88
	Fall 2006	4	3	21	72	93

Grade 4		% Minimal	% Basic	% Proficient	% Advanced	% Prof. & Advanced
<i>WI Reading</i>	<i>Fall 2010</i>	4	13	41	43	83
WFB Reading	Fall 2010	1	4	28	67	95
	Fall 2009	2	6	21	71	92
	Fall 2008	3	3	24	70	94
	Fall 2007	2	2	21	72	93
	Fall 2006	1	1	28	66	94
<i>WI Lang Arts</i>	<i>Fall 2010</i>	5	18	44	32	76
WFB Lang. Arts	Fall 2010	2	4	30	63	93
	Fall 2009	3	4	36	58	94
	Fall 2008	1	6	31	62	93
	Fall 2007	1	3	31	63	94
	Fall 2006	2	4	40	53	93

WFB Longitudinal WKCE & WAA Aggregate PERCENTAGE Scores

Grade 4 continued		% Minimal	% Basic	% Proficient	% Advanced	% Prof. & Advanced
<i>WI Math</i>	<i>Fall 2010</i>	12	9	41	38	79
WFB Math	Fall 2010	4	4	27	65	92
	Fall 2009	2	3	30	65	95
	Fall 2008	3	1	28	68	96
	Fall 2007	2	3	25	69	94
	Fall 2006	1	5	37	56	93
<i>WI Science</i>	<i>Fall 2010</i>	5	18	58	20	78
Science	Fall 2010	1	4	53	41	95
	Fall 2009	2	5	50	43	93
	Fall 2008	2	5	47	46	93
	Fall 2007	2	4	50	44	94
	Fall 2006	2	7	53	37	90
<i>WI Soc. St.</i>	<i>Fall 2010</i>	2	6	27	65	91
WFB Soc. St.	Fall 2010	1	3	11	86	96
	Fall 2009	2	2	13	83	96
	Fall 2008	2	1	12	84	96
	Fall 2007	1	3	9	86	95
	Fall 2006	1	0	11	87	98

Grade 5		% Minimal	% Basic	% Proficient	% Advanced	% Prof. & Advanced
<i>WI Reading</i>	<i>Fall 2010</i>	4	12	44	41	85
WFB Reading	Fall 2010	2	3	29	66	95
	Fall 2009	1	2	24	72	96
	Fall 2008	1	1	20	75	95
	Fall 2007	1	4	16	79	97
	Fall 2006	1	2	23	74	97
<i>WI Math</i>	<i>Fall 2010</i>	12	8	34	46	79
WFB Math	Fall 2010	3	3	21	71	93
	Fall 2009	2	2	30	64	94
	Fall 2008	2	3	20	73	93
	Fall 2007	2	5	28	65	93
	Fall 2006	1	6	30	63	93

WFB Longitudinal WKCE & WAA Aggregate PERCENTAGE Scores

Grade 6		% Minimal	% Basic	% Proficient	% Advanced	% Prof. & Advanced
WI Reading	<i>Fall 2010</i>	4	9	41	45	86
WFB Reading	Fall 2010	2	1	21	77	97
	Fall 2009	1	6	13	79	92
	Fall 2008	2	2	25	71	96
	Fall 2007	2	4	16	79	95
	Fall 2006	2	5	19	75	94
WI Math	<i>Fall 2010</i>	11	9	36	44	80
WFB Math	Fall 2010	4	1	18	78	95
	Fall 2009	3	4	17	76	93
	Fall 2008	2	3	30	65	95
	Fall 2007	4	5	11	80	91
	Fall 2006	3	2	29	67	96

Grade 7		% Minimal	% Basic	% Proficient	% Advanced	% Prof. & Advanced
WI Reading	<i>Fall 2010</i>	5	9	39	48	87
WFB Reading	Fall 2010	1	3	14	82	96
	Fall 2009	1	2	24	72	92
	Fall 2008	2	2	20	76	96
	Fall 2007	1	4	16	79	94
	Fall 2006	2	2	23	74	94
WI Math	<i>Fall 2010</i>	9	12	45	35	79
WFB Math	Fall 2010	4	2	25	70	94
	Fall 2009	2	2	30	64	94
	Fall 2008	3	4	20	73	93
	Fall 2007	2	5	28	65	93
	Fall 2006	1	5	31	63	94

WFB Longitudinal WKCE & WAA Aggregate PERCENTAGE Scores

Grade 8		% Minimal	% Basic	% Proficient	% Advanced	% Prof. & Advanced
WI Reading	<i>Fall 2010</i>	5	8	39	47	87
WFB Reading	Fall 2010	2	4	26	67	93
	Fall 2009	2	6	23	69	92
	Fall 2008	1	5	22	72	94
	Fall 2007	1	2	26	71	97
	Fall 2006	0	4	22	73	95
WI Lang Arts	<i>Fall 2010</i>	15	22	34	28	62
WFB Lang. Arts	Fall 2010	7	13	33	46	80
	Fall 2009	7	10	26	57	83
	Fall 2008	8	8	25	59	84
	Fall 2007	5	13	27	56	83
	Fall 2006	5	9	36	49	85
WI Math	<i>Fall 2010</i>	9	12	47	31	78
WFB Math	Fall 2010	3	3	40	53	93
	Fall 2009	4	4	27	65	92
	Fall 2008	2	4	27	67	94
	Fall 2007	3	3	33	61	94
	Fall 2006	2	8	38	51	89
WI Science	<i>Fall 2010</i>	8	14	45	32	77
WFB Science	Fall 2010	4	9	46	41	87
	Fall 2009	4	4	42	50	92
	Fall 2008	4	8	48	41	89
	Fall 2007	2	5	40	53	93
	Fall 2006	1	8	37	52	89
WI Soc.St.	<i>Fall 2010</i>	5	13	37	44	82
WFB Soc. St.	Fall 2010	2	4	31	63	93
	Fall 2009	2	7	22	69	91
	Fall 2008	1	7	22	70	92
	Fall 2007	1	2	27	70	97
	Fall 2006	1	4	20	73	93

WFB Longitudinal WKCE & WAA Aggregate PERCENTAGE Scores

Grade 10		% Minimal	% Basic	% Proficient	% Advanced	% Prof. & Advanced
WI Reading	<i>Fall 2010</i>	8	16	33	42	75
WFB Reading	Fall 2010	2	5	21	73	93
	Fall 2009	3	3	18	76	94
	Fall 2008	1	3	18	76	94
	Fall 2007	2	4	18	75	93
	Fall 2006	1	4	18	77	95
WI Lang Arts	<i>Fall 2010</i>	9	18	52	20	72
WFB Lang. Arts	Fall 2010	3	9	44	44	88
	Fall 2009	1	5	53	40	93
	Fall 2008	2	7	46	44	90
	Fall 2007	2	9	49	41	90
	Fall 2006	1	6	49	45	94
WI Math	<i>Fall 2010</i>	14	14	48	23	71
WFB Math	Fall 2010	5	6	39	50	89
	Fall 2009	4	8	43	45	88
	Fall 2008	4	7	42	47	89
	Fall 2007	7	7	39	47	86
	Fall 2006	4	7	36	53	89
WI Science	<i>Fall 2010</i>	14	10	33	41	74
WFB Science	Fall 2010	7	5	26	63	89
	Fall 2009	6	4	24	65	89
	Fall 2008	9	1	23	65	88
	Fall 2007	5	7	23	66	89
	Fall 2006	5	6	24	66	90
WI Soc.St.	<i>Fall 2010</i>	13	6	29	50	79
WFB Soc. St.	Fall 2010	7	0	14	78	92
	Fall 2009	5	3	20	72	92
	Fall 2008	5	3	12	79	91
	Fall 2007	6	3	17	74	91
	Fall 2006	4	2	14	80	94

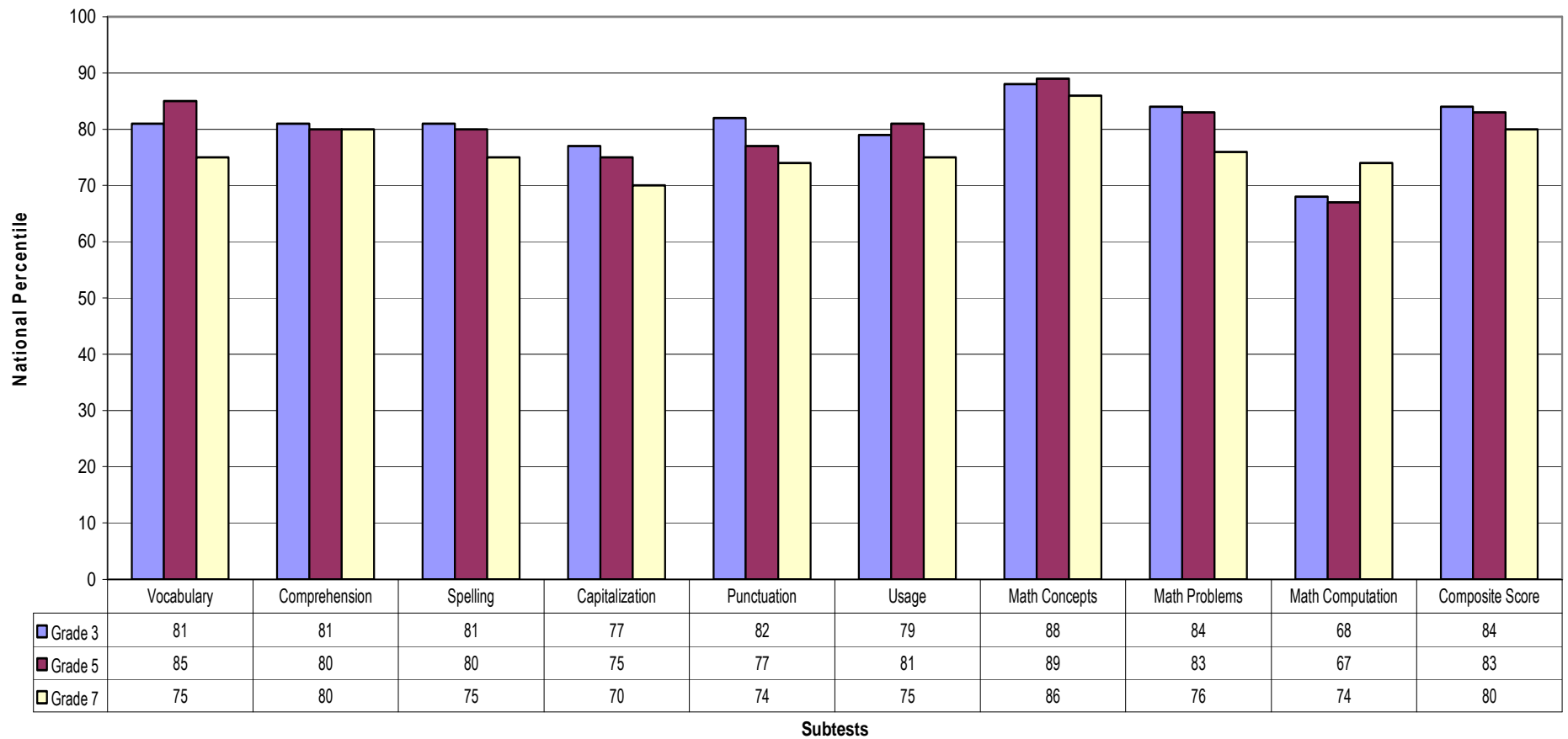
Part THREE

Results of the Iowa Test of Basic Skills Given at Grades 3, 5 and 7

A District Assessment

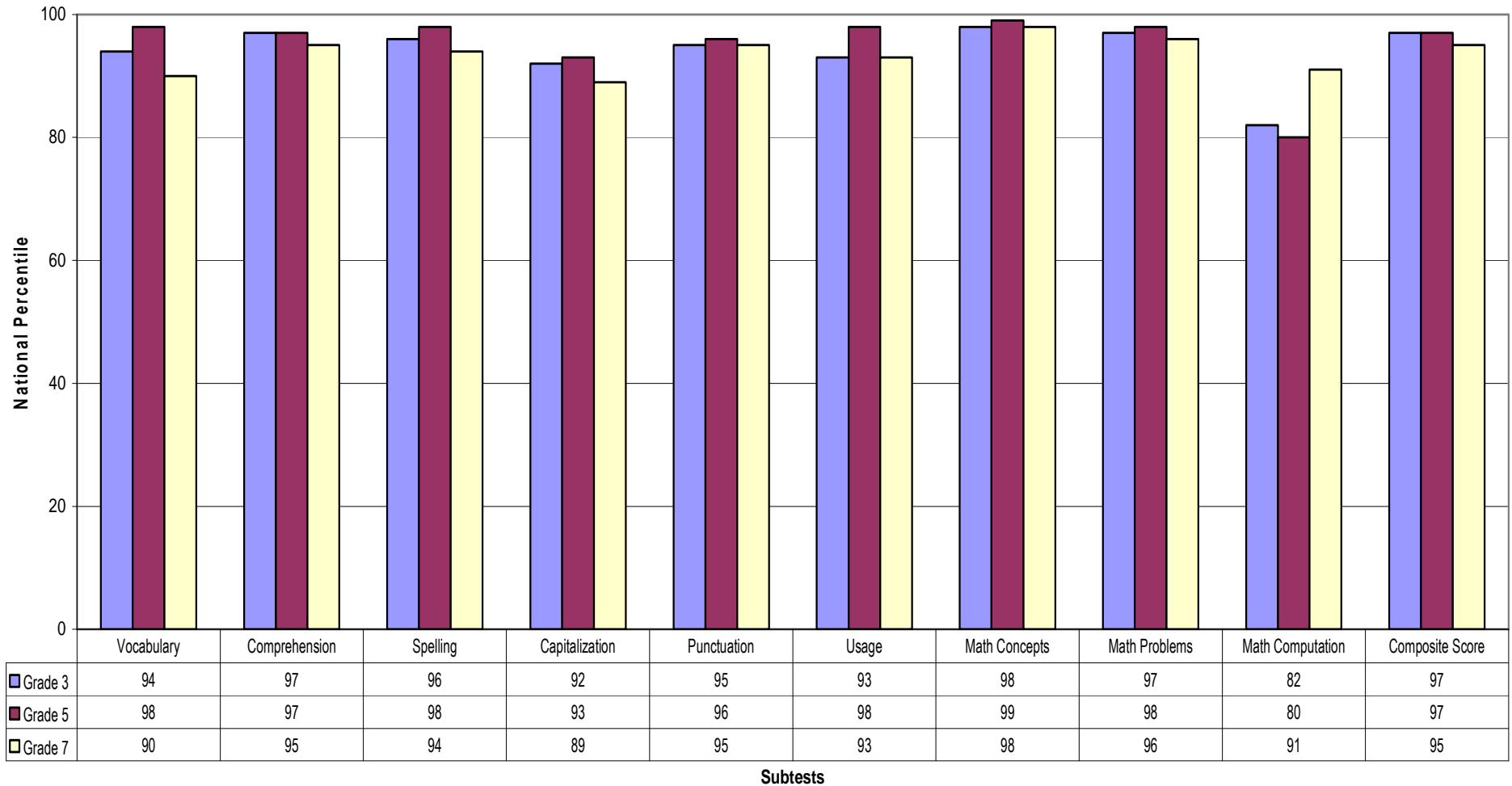
2010-2011 Iowa Tests of Basic Skills (ITBS) National PERCENTILE Ranks By Grade Level: Student Norms

WFB Schools 2010-11 ITBS Scores



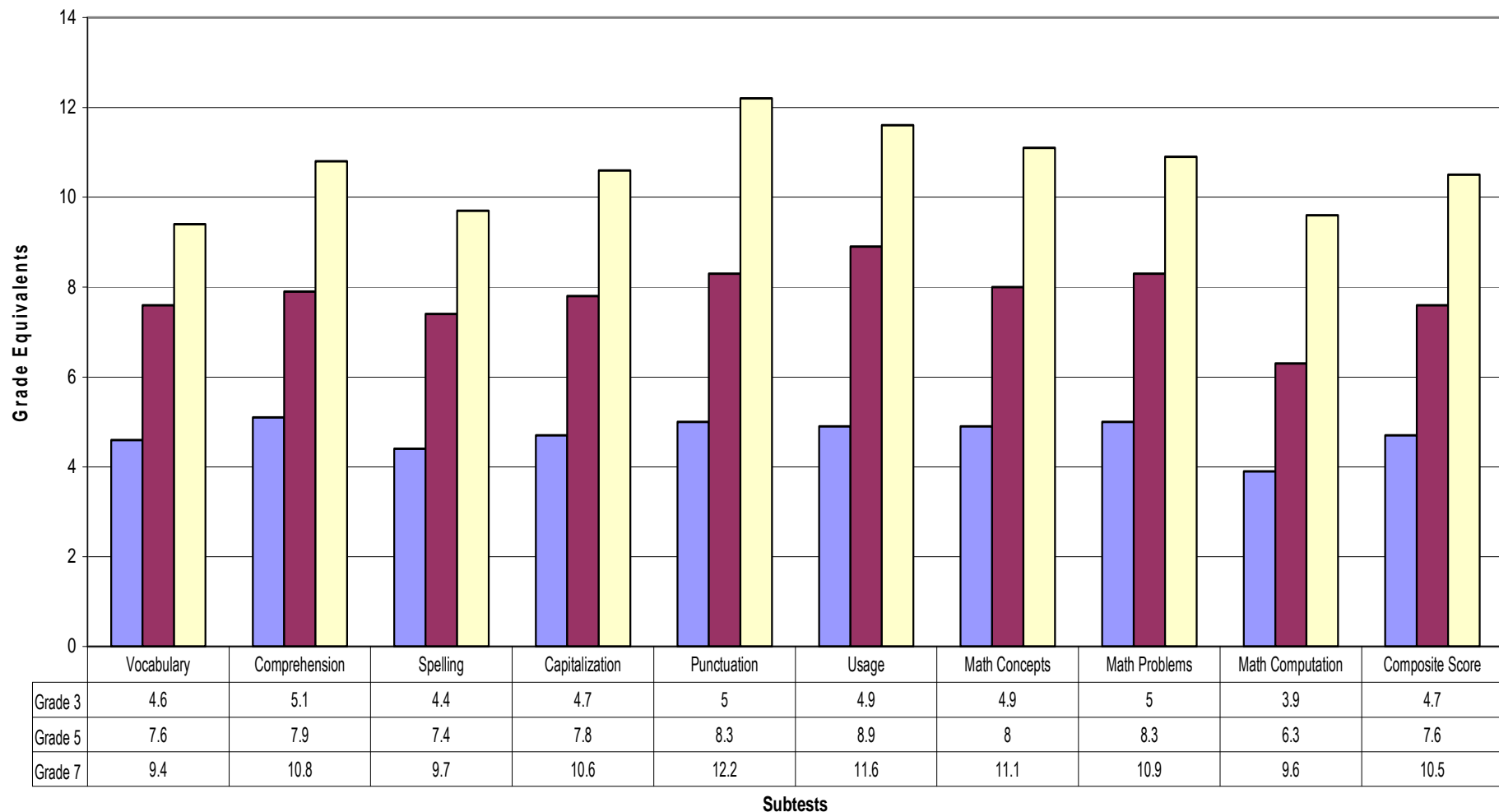
**2010-2011 Iowa Tests of Basic Skills (ITBS)
National PERCENTILE Ranks: School Norms**
(Note: School norms compare schools, rather than individual students)

WFB Schools 2010-11 ITBS School Norms



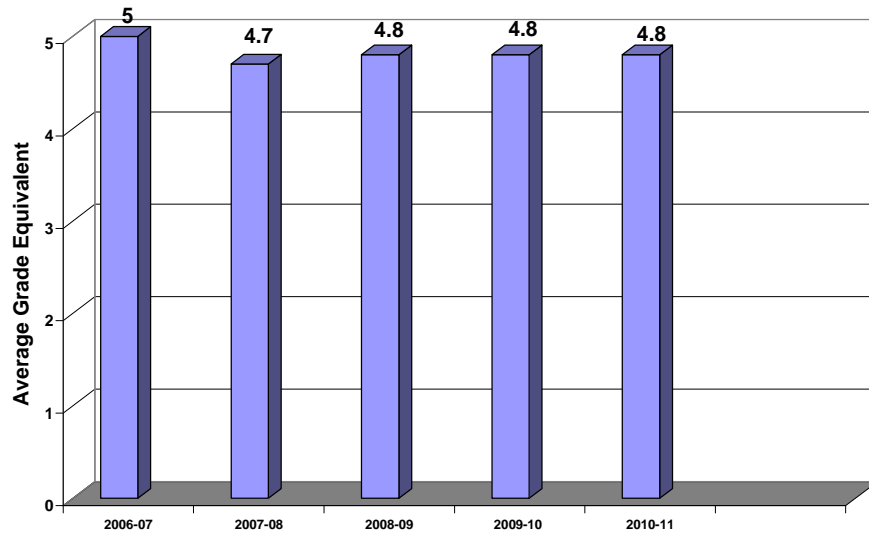
2010-2011 Iowa Tests of Basic Skills (ITBS) Average Grade Equivalent Scores

WFB Schools 2010-11 Scores

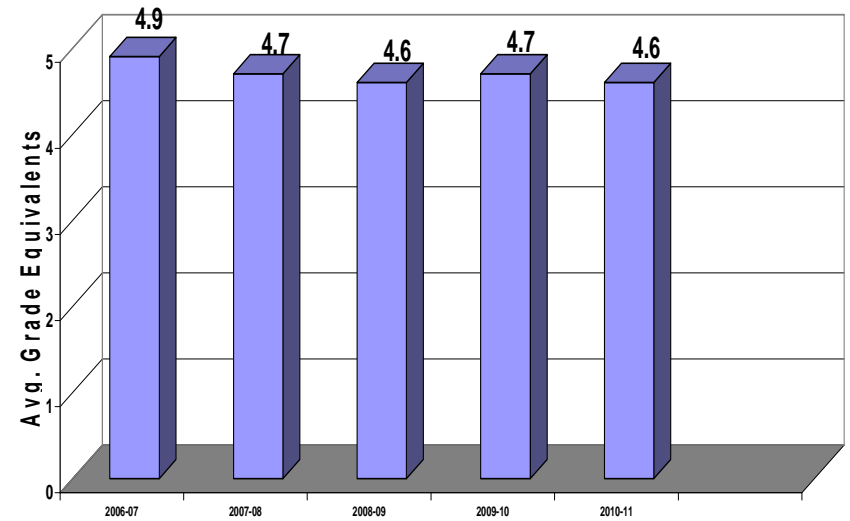


Longitudinal ITBS Grade Equivalent Scores – Grade 3

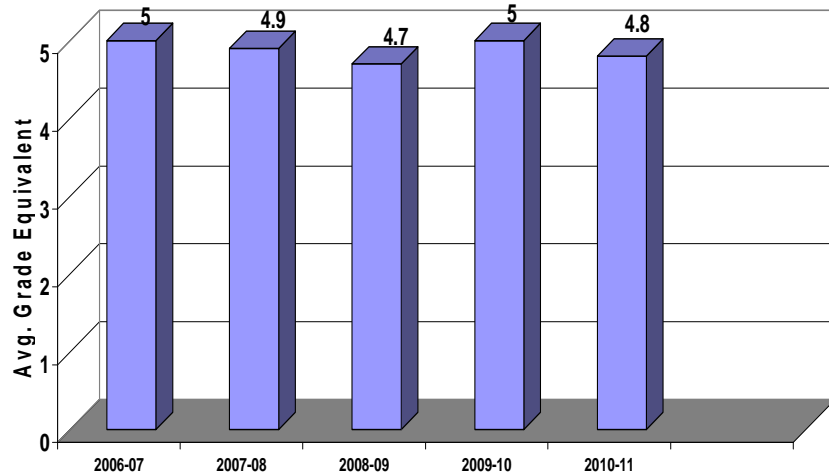
Reading



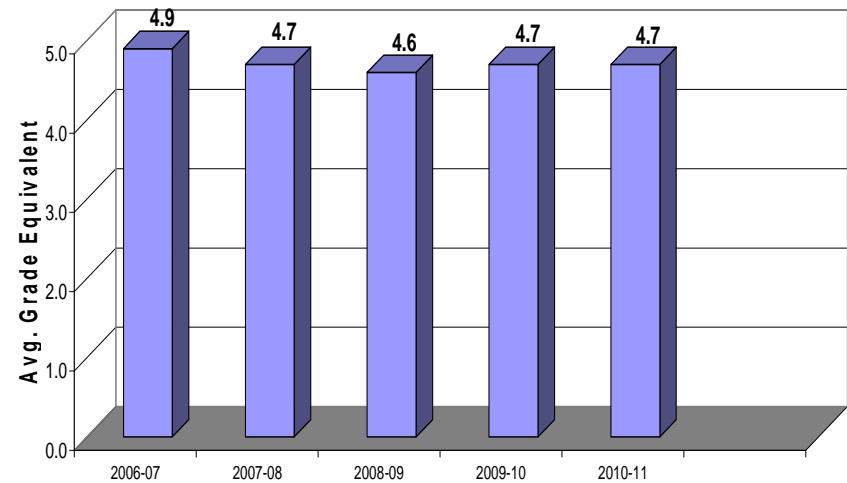
Math



Language

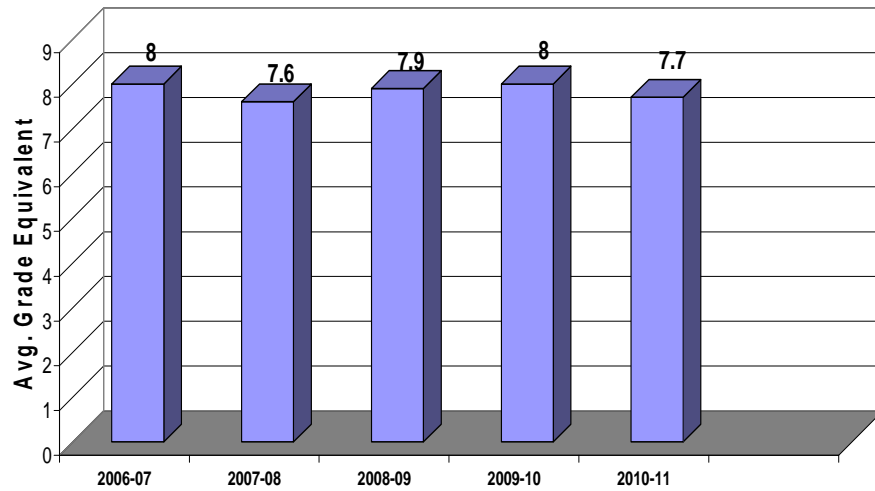


Composite Scores

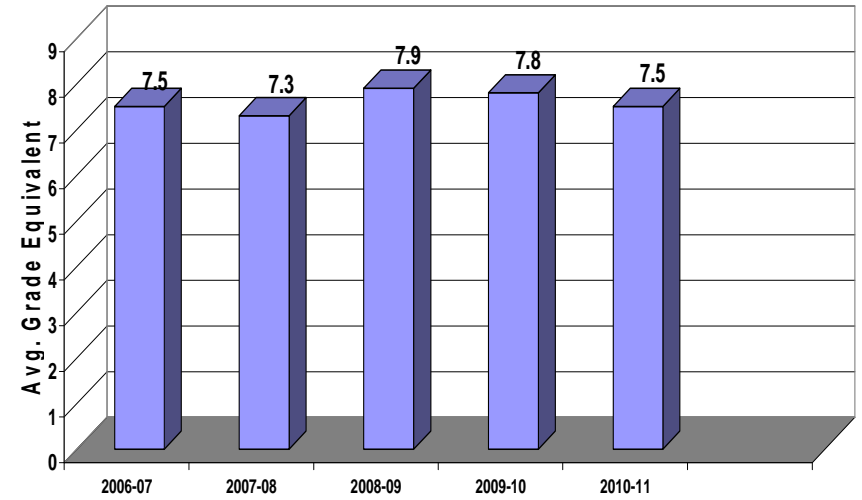


Longitudinal ITBS Grade Equivalent Scores – Grade 5

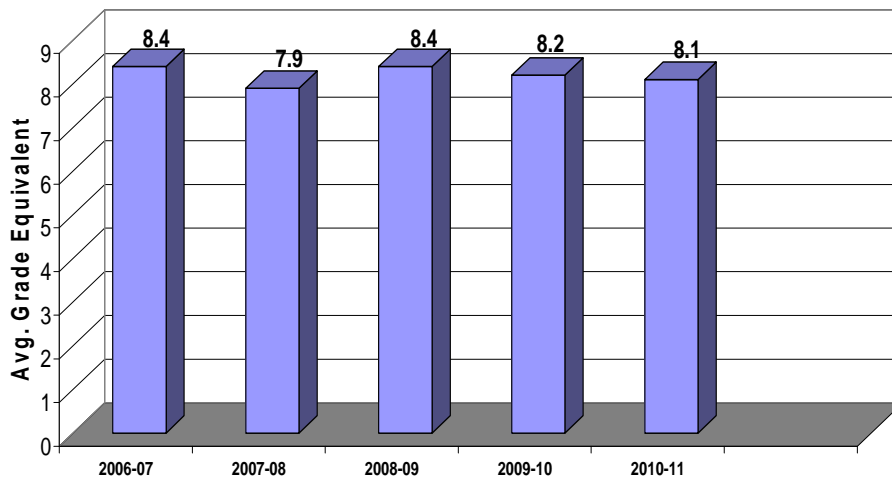
Reading



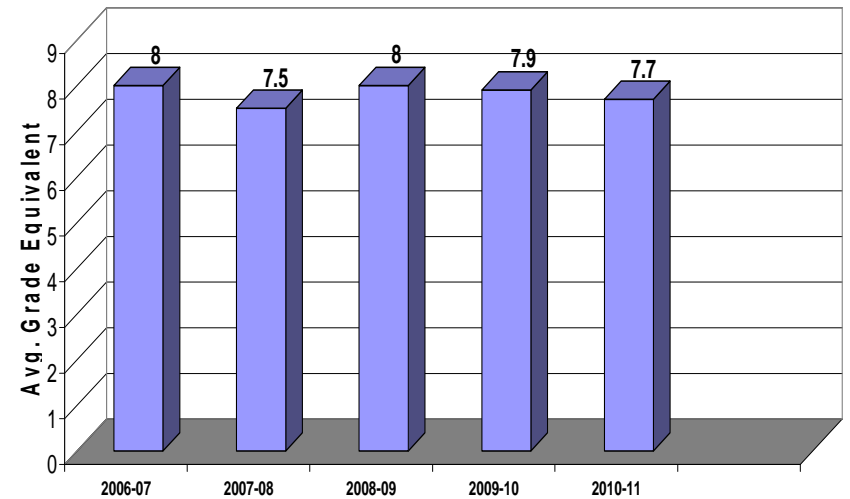
Math



Language

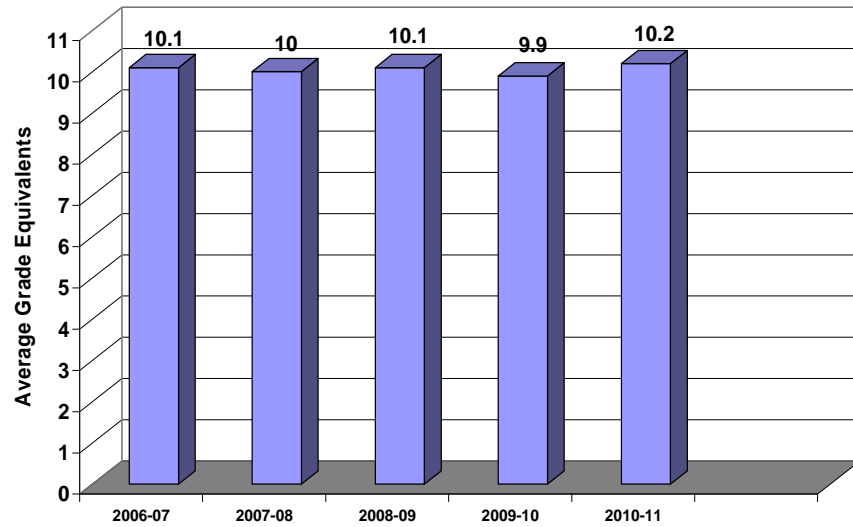


Composite Scores

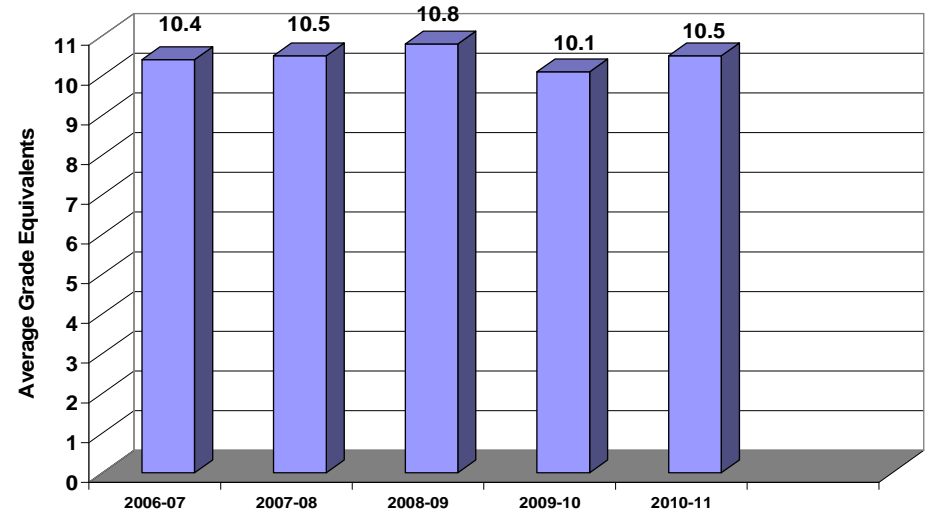


Longitudinal ITBS Grade Equivalent Scores – Grade 7

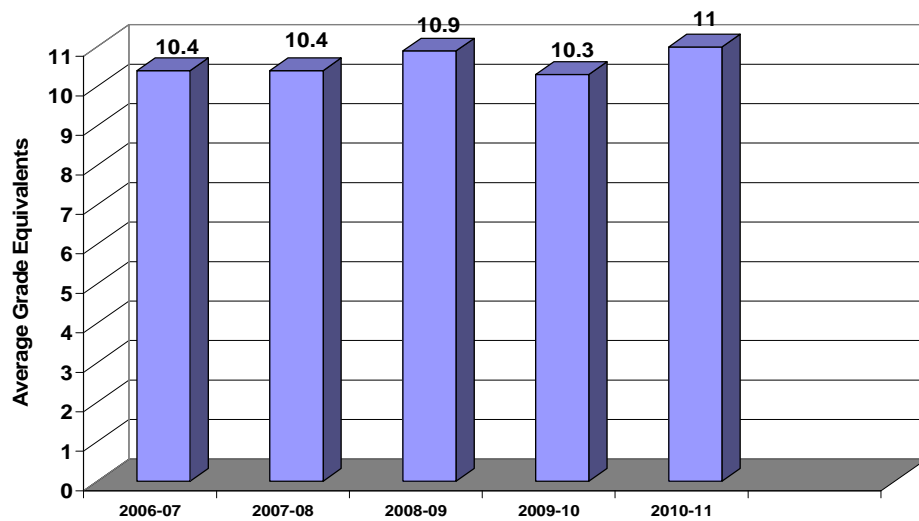
Reading



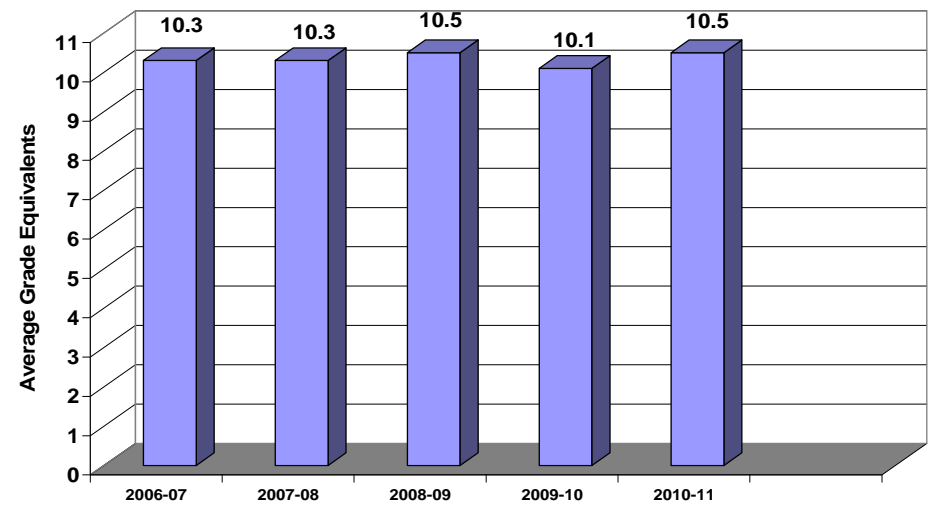
Math



Language



Composite Scores



Part FOUR

Results of the SAT, ACT, AP and NMSQT

Results of the SAT, ACT, AP, NMSQT Optional Assessments

SAT	Critical Reading Mean Score						Mathematics Mean Score					
	2004-05	2005-06	2006-07	2007-08	2008-09	2009-10	2004-05	2005-06	2006-07	2007-08	2008-09	2009-10
Whitefish Bay	605	601	622	649	601	648	609	629	622	663	632	646
<i>National</i>	508	503	502	502	501	501	520	518	515	515	515	516
% WFB Participation	49%	49%	40%	25%	21%	19%	49%	49%	40%	25%	21%	19%

ACT	Mean Composite Score									
	2001-02	2002-03	2003-04	2004-05	2005-06	2006-07	2007-08	2008-09	2009-10	
Whitefish Bay	25.2	25.9	25.7	25.4	25.1	25.7	25.4	26.2	25.7	
<i>National</i>	21.0	21.0	21.0	22.2	22.2	22.3	22.3	22.3	22	
% Student Participation (2010= 60% state average)	83%	81%	90%	90%	88%	88%	85%	85%	91%	

Advanced Placement (AP)	Fall Enrollment: 9 th -12 th	# taking exams	% taking exams	# exams taken	% of Scores 3 or Above
<i>2009 - 2010 State Summary</i>	277,853	26,719	9.6%	43,268	68.4%
2009 - 2010	897	230	25.6%	454	89.6%
2008 - 2009	890	232	26.1%	481	86.9%
2007 - 2008	934	246	26.3%	525	87.4%
2006 - 2007	964	203	21.1%	438	90.4%
2005 - 2006	913	187	20.5%	406	90.9%

National Merit Scholarship Qualifying Test	Commendations	Semi-finalists	Finalists
Class of 2010	2	9	7
Class of 2009	10	7	7
Class of 2008	6	15	13
Class of 2007	4	13	12
Class of 2006	11	11	10

End of report