

Name: Mr. Collins

Prd: 1 Group Members:

Mr. Yanisch, Ms. Ethen

Performance Assessment: Exemplar of what you will be expected to do this year

\* = points of importance!

You and your fellow classmates want to do an experiment on the affect that energy drinks have on reading rate. Using the equipment and materials supplied to answer the following question:

**How does drinking Monster Energy drink affect the rate you read science information, compared to drinking nothing while reading science information.**

Explain which chemical tests you performed and on which samples. Record your results and give evidence to support your conclusions and answers to questions. Use the outline that follows as a guide

**A. Problem Question(s) I will try to answer:** (be specific)

\* specific and clear!

Does drinking monster energy drink affect the rate you read science information, compared to drinking nothing.

**Hypothesis:**

monster energy drink will improve or increase the rate at which I read science content/information compared to drinking none.

**B. Materials I will use:** (List all materials you use and the quantity of each)

- (1) Timer or Clock
- (6) 16oz cans of monster energy drink.
- (1) Sample Science for 7th grade student.

\* # of each piece of material  
- detailed

**C. Experimental Procedures I will follow:** (write directions as if a fellow classmate would follow them)

1. Read the selected 7th Grade Science book for 20 minutes uninterrupted. Record how many pages were read.
2. Drink ~~the can~~ <sup>one can</sup> of monster energy drink. wait. 5 minutes.
3. Read another similar science section for 20 un-interrupted minutes. Record how many pages were read. wait 1 DAY.
4. Repeat steps 2 and 3 above After drinking 2 cans of monster.
5. Repeat steps 2 and 3 above after drinking 3 cans of monster.
6. Record all observations and data & complete report.

\* organized, step-by-step, Not too wordy!

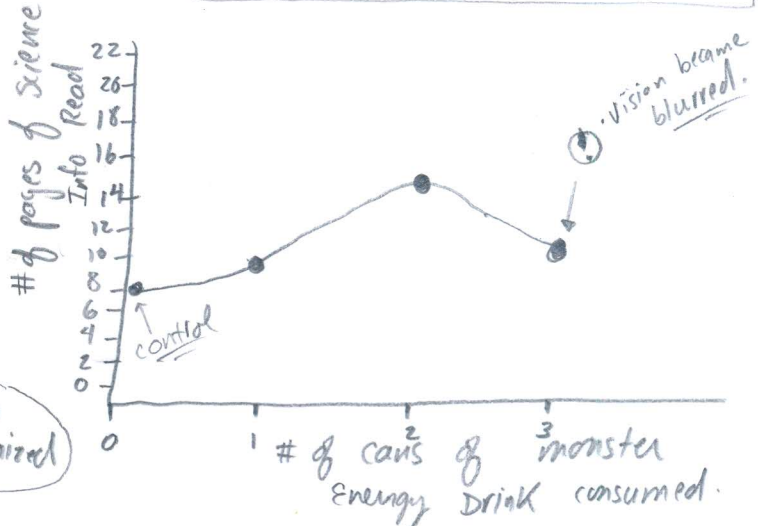
#### D. Data / Observations/Graphs:

**Control** = Reading when drinking no monster

Trial #	# of Cans of monster drank	# of pages Read in 20 minutes
1.	0	8
2.	1	10
3.	2	15
4.	3	12

\* Labels!  
Clean + organized

Graph of monster drank vs. # of pages read.



#### E. Conclusion & Analysis: "What I found out" (use your data and observations to prove your findings)

Explain your results: Based on the results my hypothesis was correct, when drinking monster, in trials 2, 3, + 4 the number of pages read were higher than not drinking monster. The graph above shows the same trend. that only 8 pages were read when no monster was drank vs 10, 15, 12 pages read when drinking monster.

How do your results explain what you know about the affect of sugar and caffeine on the body?

I know that caffeine is a stimulant and helps the body be more alert. Sugar provides calories which the body needs for normal functioning. So with the body being more alert and nourished, the student was able to read more efficiently after consuming the energy drink.

Other Comments?

Experimental Notes

After consuming 3 cans of monster; the rate of reading dropped slightly. This may be due to the blurring of vision or having too much caffeine. So up to 2 cans may be the limit, before the reader becomes overstimulated and actually loses focus.