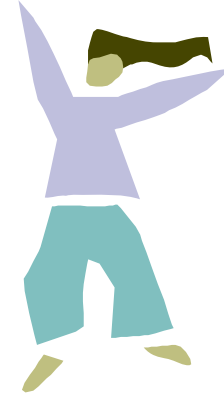


WHITEFISH BAY MIDDLE SCHOOL COURSE DESCRIPTIONS



STUDENT SCHEDULING INFORMATION: **GRADE 7**

REQUIRED COURSES:

All seventh grade students are required to take “core” academic classes under an arrangement called the **House Concept**. A team of teachers will have the same group of students for the following subjects:

- Language Arts-7**
- Literature-7**
- Level II, III or IV Math**
- Science-7**
- Social Studies-7**

All students are required to use the agenda notebook provided by the school. If a student loses his/her agenda notebook, he/she must purchase a new one from the office.

Directions:

- **MAKE COURSE SELECTIONS VERY CAREFULLY.**
- Once a course selection is made, students will be expected to stay with their decision, i.e., schedules will not be changed.
- The middle school exploratory courses are important to a student’s learning in that they provide:
 - Education in an area of the student’s interest.
 - Career awareness information
 - Incorporation of basic skills such as – reading, writing, listening, and expressing oneself
 - A broadening of the student’s life learning experiences.
- **IF YOU HAVE ANY QUESTIONS REGARDING YOUR CHILD’S EDUCATIONAL PROGRAM, PLEASE FEEL FREE TO CONTACT YOUR CHILD’S GUIDANCE COUNSELOR.**

REQUIRED COURSE DESCRIPTIONS:

| | |
|-----------------------------------|---|
| Level II Math | The purpose of mathematics education is to build the high levels of mathematical skills, processes, thinking, and problem solving necessary to meet the challenge of a changing technological society. In Level II Math, students will know and understand at a grade appropriate level: language and patterns of algebra, number sense, operation of fractions, ratios, rates and proportions, percents, integers, geometry, counting and probability, and statistics. Study skills are emphasized through use of notebooks, displaying order, organization and accuracy. |
| -or- | |
| Level III Math | |
| -or- | The purpose of mathematics education is to build the high levels of mathematical skills, processes, thinking, and problem solving necessary to meet the challenge of a changing technological society. This course is designed as a preparation for high school algebra/geometry. In Level III Math, students will know and understand arithmetic at a grade appropriate level –including number theory, fraction concepts, rational and irrational numbers, ratios, proportions and percents, and data analysis and probability. Students will also know and understand algebra – including integers, equations, inequalities and graphing. Finally, the students will know and understand geometry – including circles, polygons, surface area and volume. |
| Level IV (Algebra) | The level IV Algebra program is an accelerated math course that parallels that of the algebra course at the high school. Students who successfully complete this course receive a statement on their high school transcript stating such completion, but do not receive high school credit. The course covers the foundation skills of linear algebra, including the rules of algebra, linear equations, linear inequalities, systems of equations, powers and exponents, quadratic equations, polynomials, factoring, proportions, functions and connections to geometry. Students will also be introduced to problem solving, aided by the use of school provided graphing calculators. Students who successfully master concepts covered in this course will be placed in geometry their freshman year at the high school. |
| Language Arts/Literature 7 | The goal in seventh grade language arts/literature is for each student to become a proficient and confident reader, writer, speaker and listener. Language arts consists of literature and language classes which share a two-period block of time, providing opportunities for coordinated instruction between the two subject areas. Language skills are integrated with literature study and include composition, grammar, speaking, and vocabulary, using the <i>Vocabulary Workshop</i> program. The major areas of instruction in literature class are reading comprehension and content reading/study strategies. |
| Science 7 | In seventh grade science, students observe the world that surrounds them and explain these observations in the context of science. They analyze data obtained through experiments, and apply the information to various curricular topics. Students participate in and create the various hands-on laboratory activities, interactive web-based projects, research and authentic assessments. The various topics covered during seventh grade science include: earth science (erosion, soil, weathering, ecology, and environmental studies), physical science (states of matter, electricity, waves, magnetism, sound, light) and life science (cell processes and genetics). |
| Social Studies 7 | Through the world cultures course, students will develop a broad understanding of the recent history, and modern day situation in various regions around the world. By focusing on countries' locations, physical geography, government, economics, and culture, students will compare and contrast the social institutions common to all nations. Through a variety of activities the students will gain an understanding of the challenges and possible opportunities facing our world today and in the future. |

REQUIRED EXPLORATORY WHEEL:

All seventh graders will rotate through five exploratory courses of seven weeks duration. This is called the **Required Exploratory Wheel** and consists of classes entitled:

- Art 7
- Computers 7
- Design & Construction II
- Leadership 7
- Life Skills 7

| | |
|-------------------------------------|---|
| Art 7 | Students continue the development of creative and critical thinking skills learned in sixth grade with the same emphasis on self-expression, self-esteem, perceptual awareness, creative potential, and aesthetic appreciation. Students are encouraged to discover their own personal style with more intensity of project length. Using right-brain techniques learned in sixth grade, students build upon all their drawing and painting skills and techniques. The elements of art and principles of design are reinforced and exposure to art history is included. The use of a personal sketchbook encourages drawing practice and promotes imaginative expression. |
| Computers 7 | The goal of this class is to expand the students' development of knowledge and skills in five strands: Societal and Ethical Issues, Spreadsheet, Keyboard Utilization/Word Processing/Desktop Publishing, Multimedia/Presentation, and Telecommunications/Internet. Students will utilize and integrate software, such as Microsoft Word, Excel and PowerPoint. Students will also learn to search the Internet efficiently with emphasis on appropriately citing sources. |
| Design & Construction II | This seven week 7 th grade course will focus on architectural design, drafting, and model building. Students learn the characteristics of twelve common architectural styles and go on a walking architectural tour of Whitefish Bay to see various houses built in these styles. Students go through the architectural design process as they design, sketch and produce final drafted "blueprints" for a "clubhouse" in the architectural style of their choosing. Finally, students build a 3D architectural model of their clubhouse complete with interior walls, furniture and removable roofs. |
| Leadership 7 | The leadership development course will include lessons in goal setting, problem solving, communication and social skills training. In addition, the concepts of emotional intelligence, and the effects of peer pressure with how to counteract its effects are explored. Other aspects of this class include how to develop a healthy self-concept and healthy relationships in and out of school. |
| Life Skills 7 | This class emphasizes decision-making skills necessary to resist peer and media pressure to use drugs, tobacco and alcohol. It also provides students with the skills needed to deal with the challenges of life as a teenager. Included in the seven-week segment of the Life Skills program will be a separate unit of Human Growth and Development education. |

ELECTIVE COURSES:

Physical education meets every other day opposite music choices, study hall, or support classes. Seventh graders not recommended for Academic Support may choose **ONE** of the following options:

- **Option 1: World Language Option**
(one language – French, German, or Spanish and one music – choir, band, orchestra, general music)
- **Option 2: Study Hall Option**
(Study hall and one or two music options – choir, band, orchestra or general music)

| | |
|---|--|
| Band | Band provides the opportunity for students to study instrumental music, with public performance as an end result. The literature used exposes the students to a variety of musical elements. In addition to full-band rehearsals, band members will receive a small group lesson each week. Concert etiquette is also stressed. |
| Choir | Choir provides the opportunity for students to study vocal music with public performance as an end result. The literature used exposes the student to a variety of song forms and musical styles in three parts, as well as instruction in musical elements. Concert etiquette is stressed. |
| Lunch Choir | Lunch Choir is designed and offered to meet the musical needs of students who choose a World Language, participate in instrumental or general music, and still wish to be part of the Seventh Grade Choir. Musical concepts of three-part songs, correct choral singing, and concert etiquette parallel regular choir. The students meet one day each week in small groups to prepare for performances with the regular choir. |
| General Music | Seventh grade students must select a minimum of one music class in their schedule. General music is entirely about “doing” music. Students will actively experience music through the use of music learning stations (computer stations with MIDI keyboards, theory programs and games, historical software, CDs, books, etc.). Classroom projects include managing a band through the use of <i>Concert Tour Entrepreneur</i> , making a music video, lyric/form project, musical theater, significant musicians of today, and music technology. |
| Orchestra | Orchestra provides the opportunity for students to study orchestral music and further develop performance skills. Emphasis is on advanced precision and musicianship. Solo and small ensemble participation is encouraged. Concerts of varied musical forms and styles are presented to the public. Based on teacher availability, small group lessons are occasionally provided. |
| Physical Education | The physical education program takes the basic movements and skills that have been introduced at the elementary school level and progress toward more complex movements through repetitions and sequencing of drills and game play. Sportsmanship and cooperation are stressed at all grades. Basic knowledge of rules and regulations as well as strategy of team and individual sports is taught. Lifetime skills and activities are introduced in seventh grade through such activities as soccer, tennis, passball, fitness testing, basketball, team building, wrestling, aerobics, pickleball, volleyball, badminton, balance/fitness, track and field, softball, inline skating and power walking. A portion of each class is devoted to the use of technology and is integrated into the curriculum with heart rate monitors and pedometers. The curriculum supports physical fitness of each student including cardiorespiratory fitness, endurance, flexibility, agility, balance, muscular strength, speed, power and coordination. |
| Study Hall | Students who do not select an elective course will have a daily study hall. Those students who need extra support with academic classes are encouraged to select a study hall. |
| World Language: French, German or Spanish (level 1b) | This is the second part of the three levels which begins in sixth grade and continues through eighth grade. Together, the 6 th through 8 th grade courses are comparable to the high school Level I courses and are usually recognized as such by colleges and universities. Any student who plans to take a world language in the middle school must begin in 6th grade unless they pass a proficiency test. All five components of language study are included: listening, speaking, reading, writing and culture. |

7TH GRADE SUPPORT SERVICES:

Believing that all students can learn, Whitefish Bay Middle School provides a variety of support systems for students' academic success. These programs are designed to assist students in developing basic skills and productive work habits to better meet the expectations of our academic curriculum.

| | |
|--|---|
| Math Support | In addition to the regular mathematics classroom instruction, students receive instruction in the basic factual and functional math skills . Daily work also consists of homework practice and review for quizzes and tests. This class is for students with below average grades in mathematics. Students may be placed in math support based on teacher recommendation, classroom performance and testing results. |
| Reading Language Arts with Read 180 Integration | <p>Reading and Language Arts (RLA) are taught in a two period block for students who require intensive, differentiated reading and writing skills practice to attain grade level proficiency. Writing instruction follows the scope and sequence of regular RLA classes with minor changes in amount of required writing and more individual attention for students.</p> <p>The reading component of the course includes whole group direct instruction in reading grade level trade books as well as individualized instruction in the computer based Read 180 program. The Read 180 computer program provides differentiated, adjusted instruction and practice in word study, vocabulary, fluency, spelling and comprehension. Students also read and respond independently to full-length books they have chosen.</p> <p>Eligibility for the Reading/Language Arts with the Read 180 Integration Program is determined by a student's need for improvement in the areas of reading and writing. Recommendations by classroom teachers, special education staff, or counselors are required to be enrolled in the course. Previous test scores, grades, classroom performance, and IEP's are possible criteria for enrollment.</p> |