



Whitefish Bay

SCHOOL DISTRICT

An Exceptional Place to Learn

Facilities Advisory Committee

Community Education and Recreation:

Current State and Future Priorities

April 15th, 2025

Lydell School and Community Center



Our Agenda

- Tour of Lydell
- Summary of Observations
 - a. Strengths
 - b. Challenges
 - c. Needs
- Q&A



Whitefish Bay
RECREATION

Bringing **Community** Together



Funding and Programming

- **Fund 80**

- Funding available to public school districts in Wisconsin to run Adult Education and Community Recreation. Program must be available to all residents and expenditures can include staff, benefits, operational costs, travel and purchased services.
- WFB programming is self-sufficient and carries non-revenue generating programming (i.e. the Crossing Guard Program and some Senior Programming).

- **Programing Offered**

- Before and After School Care
- Preschool Program for ages 2-4
- Adult and Youth Enrichment
- Aquatic Programs for Youth and Adults
- Community Fitness Center Memberships
- Youth Sport Leagues and Gymnastics Program
- Adult and Youth Fitness
- Whitefish Bay Community Garden
- Special Events: i.e., Bike Rodeo, Touch a Truck, Community Resale Event
- **Note: 2023-2024 school year 10,821 enrollments in 1,310 activities**



Facility Use

- **Locations Used:**

- In addition to Lydell, the Recreation and Community Education Department uses all school buildings, Cahill Pavillion, and Tennis Courts.
- Co-op Programing with Shorewood, Nicolet and Mequon Recreation and Community Education programming expands our offerings by using other district facilities to run programs our facilities cannot accommodate.

Percentage of Location Usage	
Location	Percentage
High School	29%
Lydell	24%
Off-Site	22%
Richards	11%
Cumberland	10%
Cahill	2%
Virtual	2%
Middle School	0%



Current State: Lydell

- **Strengths:**

- Dedicated space for Community use
- Ample parking and green spaces
- Accessibility-Ranch Style

- **Challenges:**

- Shared building with leased Tenant. Tenant uses the most valuable spaces in the building
- Bathrooms are for K5-2 grade students
- Gym specs do not accommodate adult or youth sport leagues
- Classrooms lack technology
- Building lacks storage and space for staff to break and or meet collaboratively
- Inconsistent heating and cooling-Gym will have no heat for extended periods of time

- **Future Needs:**

- Bathrooms that meet the needs of youth and adults
- Regulated heating and cooling
- Rooms designed to fit Community/School needs (Preschool, Early Childhood, Yoga, Dance, Cooking Classes, Meeting Room, Flexible Space with Technology, Gym)



Lydell Strengths: Community Use





Strengths: Accessible Parking and Green Spaces



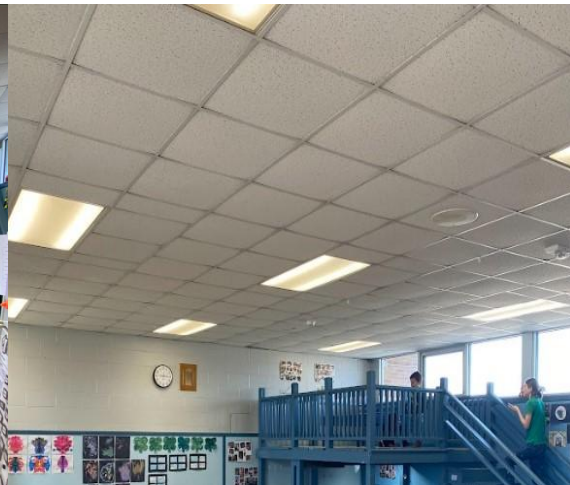


Lydell Strengths: Accessible Classrooms and Entrances



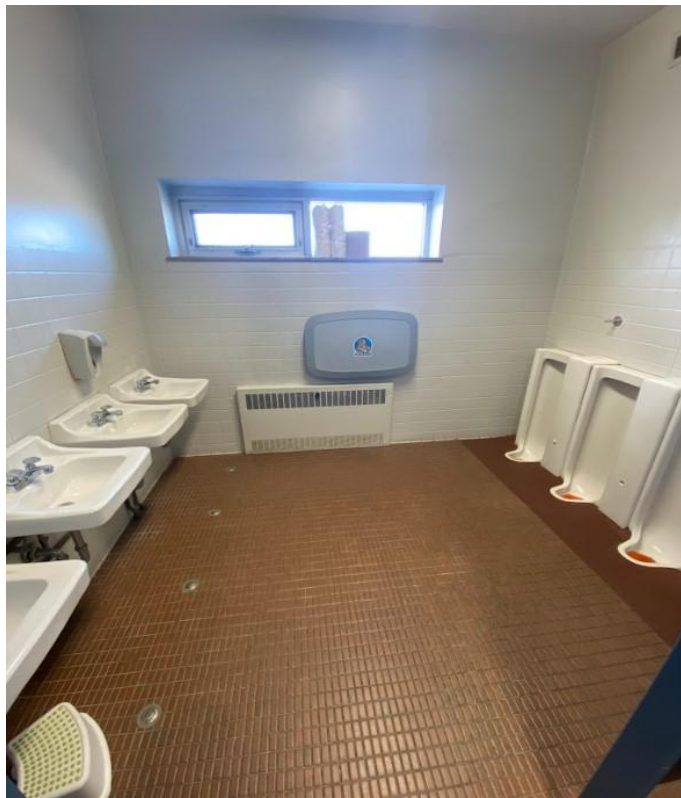
Lydell Challenge: Milestones Classrooms

Lydell: Community Ed and Rec





Lydell Challenge: Public Bathrooms





Lydell Challenge: Preschool & Community Classrooms Lack Technology





Lydell Challenge: Lack of Storage





Lydell Needs: A Building That Meets The Needs Of The Community.

- Indoor Pool (Warm Lap Pool) wth Locker Rooms
- Weight Room
- Community Classrooms and Meeting Rooms
- Yoga/Pilates/Dance Studio
- Gym for Adult and Youth Sports with Regulation Size Courts
- Therapy Rooms and classrooms that can accommodate Lydell Preschool and District EC Services
- Kitchen that can function as a kitchen
- Break Room/Lounge for Staff
- Public Bathrooms that accommodate adults, families and children.
- Program Storage and Equipment Rooms, Custodial Storage
- Large Presentation/Multipurpose spaces
- Staff Collaboration Spaces
- Pickleball Courts (inside or out)
- Contained or more secure entrances that attach to the office
- Green Space groomed for field sports like youth soccer, football and LaCrosse.



Public School Recreation and Community Education Departments Current Expansion Projects

- **Mequon Recreation and Community Education** is in the process of Pickleball Court Expansion at Range Line School. The project will include 8 public courts, walkways, fencing, nets and windscreens. Financed by Fund 80 (\$300,000) and Sponsorship. Court Rendering
- **Franklin Recreation and Community Education** is building a brand new Recreation and Community Education Center adjacent to their District Offices. The project includes outdoor courts and activity space, parking, new Recreation and Community Education Building connected to the District Offices and ECC. CERC Rendering. Financed by 2.3 million dollars saved in Fund 80 through a tax levy applied in both 2023 and 2024.



Public School Recreation and Community Education Departments Current Expansion Projects (continued)

- **West Allis-West Milwaukee Recreation and Community Services** created a Recreation Center in 2020. The District is currently in the process of expanding on this development with an Activity and Fitness Center. WAWM Expansion Project
- **Milwaukee Recreation Department** is exploring a new Recreation and Community Center and Aquatic facility at the former Browning School on Milwaukee's Northside. The project would include walking paths, public art spaces, playground equipment, pickleball courts, splash pad, basketball courts and sports fields, outdoor learning spaces and skateboard park. Playfield Projects
- **South Milwaukee Recreation** began preliminary discussions in 2021 as part of the Districts strategic planning efforts about a potential of stand alone Community Recreation Center. The fall of 2024 a committee was formed. An FAQ was developed and they are having their first community input session April 3rd. Community Workshop



Any Questions?

